

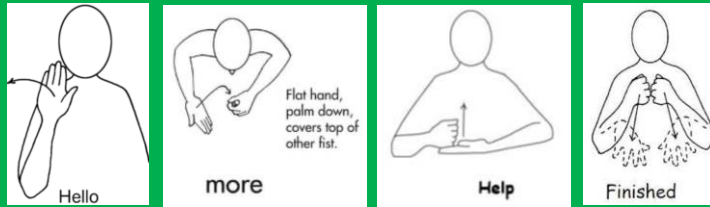
# Early Years at Doubletrees

## What do learners experience with us?



### Communication and Language

We explore storytelling through sensory stories, environmental sounds through Phase 1 Phonics and begin to engage with more formal Phase 2 Phonics sessions as the year progresses. Phase 1 sessions are taught through an Attention Autism approach to develop our listening and attention alongside curiosity for sounds around us. We are encouraged to use our preferred methods of communication to access learning.



### Personal, Social and Emotional Development

We are developing our awareness of ourselves and those around us, as well as gathering together for circle time to feel part of a group. We explore emotions and ourselves through atmospherics and TACPAC (positive touch). We are enabled and encouraged to persevere until we reach our end goals.

We work closely with the Specialist Intervention Team to develop our practice so do speak with your child's class teacher regarding any concerns you may have.

In the *Autumn* term, we are developing routines and awareness of others around us. We are encouraged to take turns and recognise objects of reference/photos/symbols to transition from one task to another.

In the *Spring* term, we begin swimming at school to further develop our gross motor skills and awareness of keeping ourselves safe. We begin to have more structured sessions as we enhance our listening and attention over the year.

In the *Summer* term, we begin preparing for the next stage in our education. We do some transitional sessions with other classes where appropriate.

Over the year, we are working towards our personal learning goals linked to our EHCPs and there will be opportunities for parents/carers to attend events in school.

### Mathematical Development

Early Maths involves a focus on nursery rhymes and contextual experiences through our play and interests. We explore cause and effect and real life problem solving, as well as develop an understanding of our own spatial awareness. We explore shape, space and measure through our continuous provision and Attention Autism sessions.

### Physical Development

We use the SI room, hall and adventure playground on a daily basis to engage in a sensory diet and movement for alertness. We develop our gross motor skills through activities such as climbing and heavy work. We also develop our fine motor skills through manipulation of objects, sensory exploration of mixed media and pointing for choice as part of our daily routines.

### Expressive Arts and Understanding the World

We explore our senses and understanding of the world through messy play, sensory stories, visits in the community and meeting staff in different roles/careers. We express ourselves through the use of instruments and meet with peers across school for Makaton choir and assemblies.

# Early Years at Doubletrees Partnership Working



## Communication and Language

Encourage preferred means of communication. We are using Makaton, symbols, photos and objects of reference to support communication in school. We repeat vocalisations through Intensive Interaction and offer a rich-language environment in our setting. We will send home library books to share at home.

## Personal, Social and Emotional Development

Label emotions as they arise, recognising what is happening at that time. Encourage turn taking, starting off with building a tower taking in turns or passing a ball. Send in a Happy Box that we can look at and share with your child.

## Home School Communication Book

Let us know how your child has been at home and if there is anything that may be useful for us to know that day. We are happy to make phone calls to discuss things further if needed.

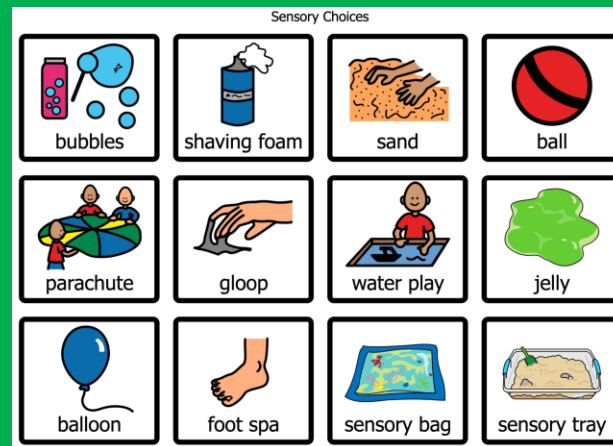
## DT/Messy Play contributions

We would be grateful for monetary contributions of £5 per term towards our messy play fund. This can be done through Parent Pay. This enables us to offer a varied sensory messy play experience for your child.

How we can work together to support your child

## Expressive Arts and Understanding the World

Engage in sensory play. We use a sensory play choice board to encourage autonomy. Please get in contact if you would like a copy. Explore wet and dry messy play both inside and outside. Develop curiosity of the outdoors, labelling what you can see, hear, feel, taste, smell. Attend events in the community. The National Autistic Society (Cornwall Branch) do regular events in the local area.



## Mathematical Development

Count each step as you walk up the stairs or count claps. Singing Hands on Youtube offer Makaton signed nursery rhymes which we use in school. Explore patterns through shapes and develop pouring and filling skills using water or sand.

## Physical Development

Encourage safe climbing and observations of taking risks. Use bikes and trikes to develop co-ordination and gross motor skills. Encourage self-help skills through the use of cutlery and cups, as well as fine motor skills to press buttons or pull up zips.

## Visits to school

We will invite parents/carers in for the following:

- EHCP reviews
- Parent Partnership meetings (once per term)
- Sharing our learning or experience in class (once per term)