

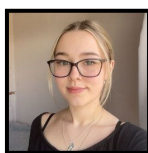
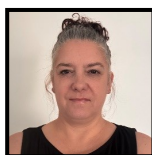


IN THE KNOW...

Staffing update

We would like to extend a very warm welcome to Donna and Verity who join our Doubletrees team as teaching assistants, and Michelle and Stevie who have changed roles, from lunch-time supervisors to TA's.

Donna Seavers



Verity Lobb

Michelle Bird



Stevie Reed-Bennett

HEADTEACHER HIGHLIGHTS

As we approach the end of the Spring term, and with this being our final newsletter before the Easter break, I would like to take a moment to thank our entire school community for your continued commitment and support. Your dedication plays a vital role in ensuring that our learners achieve the very best outcomes while enjoying a rich and engaging educational experience.

This term has provided a wide range of valuable opportunities for community engagement and work-related learning. These experiences are essential in supporting our learners to develop real-life skills beyond the classroom, while promoting inclusivity, wellbeing, and a genuine enjoyment of learning.

I would like to thank our staff, parents, and carers for their ongoing support of our events this term. From our Post-14 'My Future' event for post 14 networking options, to the many educational visits facilitated by external providers, including *Boogie and Brush Art Studios*, the *RNLI*, and *Smarter Smiles dental*; these opportunities have had a meaningful impact on our learners. They greatly benefit from, and thoroughly enjoy, these enriching and interactive experiences.

With one more week to go before the end of term— on the 2nd April, I will wish you well now for a lovely sunny break with your families, and we look forward to welcoming you all back for the Summer term on the 20th April.



Heidi Hoskin

SPOTLIGHT ON... Internet Safety

PlayStation

Does your child have a PlayStation? If so, have you set up appropriate parental controls? Some examples of the parental controls available are:

- Set age restrictions
- Set daily limits
- Control chat and messaging
- Set spend limits.

How can I block/report other players?

If your child is playing with other players, then please ensure they know how to report/block other players and to tell a trusted adult if they do come across anything upsetting or that they are unsure of. This link details how to do this based on the device they have: <https://www.playstation.com/en-gb/support/account/block-players-psn/>

What games are suitable for my child?

PlayStation have included a list of games along with their age rating to help you find a game that may be appropriate for your child to play. <https://www.playstation.com/en-gb/editorial/great-ps4-games-for-kidsand-families/>

Whilst age ratings do allow you to see if a game may be appropriate, it is also important to review the game yourself and see if it includes additional features such as chat. This will allow you to make an informed decision as to whether it is suitable and if you need to apply further parental controls.

You can find out more about the controls available here: <https://www.playstation.com/en-gb/parental-controls/>



LEADERSHIP INSIGHTS... Read all about what we get up to...

DID YOU KNOW?... OFSTED

Our Senior Leadership Team has recently completed training on the new Ofsted Education Inspection Framework, which came into effect for all schools from November 2025. The training focused on understanding the updated expectations, the shift towards a more balanced and detailed “report card” style of reporting, and the new approach inspectors will take when visiting schools. We thought we’d take this opportunity to share with you what the gradings of the new report card system mean.

Understanding the New Ofsted System

The report card will focus on the following areas: Inclusion, Curriculum and Teaching, Achievement, Attendance and Behaviour, Personal development and wellbeing, Leadership and governance. It also reviews Safeguarding.

Under the new framework, Ofsted has removed the familiar single-word overall grades (Outstanding, Good, Requires Improvement and Inadequate). Instead, schools will now receive a report card with individual grades for key evaluation areas. Each area will be graded on a new **five-point scale**:

Exceptional, Strong Standard, Expected Standard, Needs Attention, and Urgent Improvement. Safeguarding is judged separately as either ‘Met’ or ‘Not Met’.

The new scale reflects a broader, more detailed picture of school performance. Most schools nationally are expected to sit within the middle three bands: **Expected Standard, Strong Standard, or Needs Attention. Expected Standard** roughly equates to a strong ‘Good’, with some elements of outstanding, in relation to the old one-word judgements. A **Strong Standard** is roughly equivalent to the old ‘outstanding’, but early indications from inspections recently carried out suggest that this is a higher standard than the old ‘Outstanding’ and very few schools are achieving this so far. **Needs Attention** is more likely to be awarded for some areas now, much more likely than the old ‘required improvement’. Where **Needs Attention** is identified schools have the opportunity to make the necessary improvements (within 3 months) and OFSED come back in to evaluate the progress made towards the identified area.

To achieve the grade **Expected Standard** or above, schools must demonstrate all aspects of the standard. It is no longer a ‘best fit model’. This is always a challenge for specialist settings as it is a standardised framework for all schools based primarily on mainstream settings, without necessarily accounting for the individual and specialist needs of the learners within settings such as ours. Early findings are that the **Exceptional Standard** is generally considered unobtainable at present by schools so far inspected.

Most schools who were previously judged as the top end of good, under the old framework, are now being awarded **Expected Standard** with a small number of areas being awarded Needs Attention. Schools have been told to think about **Needs Attention** as ‘advisory notes.’ Curriculum, Teaching and Achievement are appearing to be the hardest areas to achieve the **Expected Standard**, many schools are being awarded these as the areas that **Needs Attention**.

Overall, the aim of the new grading approach is to provide parents with clearer insights into what a school does well and what it is working to improve, rather than summarising everything in a single headline grade.

FOCUS ON... MATHS

This term in EYFS, learners have been learning mathematical concepts through the RISE approach, encouraging child-led exploration. Activities include shape sorting, ordering by size, counting up to 10, and sensory exploration using manipulatives.

In Exploration, learners have been working on numbers to 5 and beyond through a wide range of sensory experiences both in the classroom and in areas around the school. They have been working on data handling and shape through the use of large resources in the SI room to sort and match.

In Discovery, learners have been working on counting up to 10, with opportunities to deepen their understanding of number bonds within 10. Some learners have been working on partitioning two or three-digit numbers before moving onto applying column addition. Learners have been working on measure through hands-on opportunities.

In Post-14, learners have been accessing the community to retrieve prior knowledge and apply in real-life contexts. Learners have also been establishing their Friday brunch orders for staff which has enabled regular real-life application of Mathematical skills and beyond! **Victoria Farrelly Maths Lead and Juniper class teacher**

STUDENT STORIES & STAR LEARNERS!

Each week we have a star learner assembly where we recognise all of our learners achievements. We select a star learner that corresponds with our core values below...

ACHIEVE Barney in Redwood class for exploring less familiar resources with curiosity and confidence.

BELONG Dainton in Elm class for excellent shopping skills; looking for items and ticking them off his shopping list. Well done!

COMMUNICATE Izzy in Holly class for her continued great communication skills and showing an interest in her peers, wanting to interact.

DEVELOP Isabelle in Oak class - for engaging and developing her maths skills alongside an adult, during a counting activity.

ENJOY Bumble in Rowan class - excellent engagement, persistence and exploration through various activities that she has thoroughly enjoyed.

SPOTLIGHT ON SUCCESS...

Elm Class ASDA Trip

Last week, Elm class visited the local library, ASDA and the cafe.

We are working on establishing friendships and positive relationships with our friends, the general public and staff at Doubletrees.

We practised making choices, communicating our preferences and completing a shopping list.



Thank you to all our families who support us on trips either by attending to help, or sending in money to spend at the cafe. These experiences help us with independence in a real time environment.

COMMUNITY STORIES...

Maple Class Train Journey!

Maple Class acted on feedback from their pupil voice questionnaire by organising a train trip, something the learners had expressed a strong interest in. We met Sara at Par train station, who gave us an informative guided tour of the station. The learners had the opportunity to explore different areas, including a visit to the signal box where they learned how trains are managed and kept safe on the tracks.

Some of the learners confidently spoke over the tannoy, making announcements just like real station staff, which was a fantastic confidence-building experience. We then boarded our train and travelled to St Austell, enjoying the journey and observing the scenery along the way. After spending some time there, we returned back to Par, completing a memorable and engaging trip that brought their ideas to life.



EYFS

Please [click here](#) to see what we have achieved this week.....



ENGAGEMENT

Please [click here](#) to see what we have achieved this week.....



EXPLORATION

Please [click here](#) to see what we have achieved this week.....



DISCOVERY

Please [click here](#) to see what we have achieved this week.....



POST-14

Please [click here](#) to see what we have achieved this week.....





COMMUNITY CORNER

WHAT'S HAPPENING IN THE COMMUNITY...

Parent Carer's Cornwall have some fantastic supportive workshops available to parents and carers. [Click here](#) to find out about what is available in your local community and how to book.



Healthy Cornwall have lots of healthy outdoor events over the Spring and Summer. [Click here](#) to find out more.

Are you looking for further educational places for your child for the future? [Click here](#) to learn more about what Cornwall College can offer.



[Click here](#) to see what Cornwall Opportunities are available over the County for Post 16 SEND

make a difference awards 2026

Who's your local hero? Who deserves an award?

bbc.co.uk/makeadifference

Scan to nominate

BBC RADIO CORNWALL

make a difference awards

2026 AWARD CATEGORIES

The Volunteer Award:
awarded to an individual who makes a notable difference to their community by giving their time voluntarily to help others.

The Community Group Award:
awarded to a group of people who have helped to change the lives of others within their community.

The Fundraiser Award:
awarded to an individual or group of people who have gone the extra mile to raise funds for a good cause.

The Young Hero Award:
awarded to an individual or group of young people under 16 who have made a positive impact in their community or achieved something exceptional.

The Great Neighbour Award:
awarded to an individual who helps to make the neighbourhood a better place to live or work in, either on a regular basis or through a single act of kindness.

The Active Award:
awarded to an individual or group of people who have used physical activity or sport as a way of improving the lives of those in their community.

The Environmental Award:
awarded to an individual or group of people who improve or conserve their local environment.

The Animal Award:
awarded to either a remarkable animal that improves people's lives, or an individual or group of people who improve the welfare of animals.

Visit bbc.co.uk/makeadifference to see our full Terms and Privacy Notice. Nominations will close on Tuesday 31st March 2026 at 5:00pm.

Scan to nominate

BBC RADIO CORNWALL

KEY EVENTS...

Wednesday 1st April - Easter Bunny Visit to School for all classes.

Thursday 2nd April. Last day of the Spring term. Learners break up for the Easter Holiday's.

Monday 20th April. First day of the Summer term and learners return to school.



ParentPay

As it approaches the end of the term, please remember to log in to parent pay and clear any outstanding

balances for school meals, trips and events. This enables us to finalise our financial accounts for each school term. Thank you.