



# Celebrating Maple class!



**Term:**  
Summer 2  
2026

Welcome back! We hope you all had a lovely half-term break ready for the final half term of this academic year

Welcome back to Summer Term 2; our final and most action-packed term of the year! We have lots to look forward to, including Discovery Sports Day, exciting trips around our local area, and plenty of opportunities to reinforce and celebrate all the learning that has taken place this academic year. We can't wait to make the most of our final term and create lots more special memories in maple class along the way!

## Outdoor learning- In to the woods

Maple Class had the most wonderful morning at "Into the Woods" Forest School! The children enjoyed making their own bread to toast over the fire, preparing delicious strawberry jam, exploring the woods, discovering the pond, and meeting Charlotte and Bob. There was plenty of fun with marshmallow toasting, singing in the hammocks, and playing on the tree swings. A fantastic morning was had by all!



## Discovery pathway VE day picnic

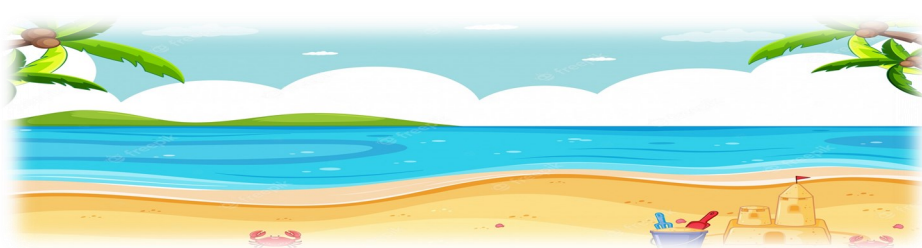
The Discovery Pathway came together to celebrate VE Day with a special picnic and street party atmosphere. Learners from Cedar, Maple and Cherry classes enjoyed music, activities and spending time together whilst learning about the importance of this day.



**New areas of the curriculum - independence, communication and learning outside the classroom:** This year, we have introduced these sessions into our curriculum. It has been fantastic to see how all of Maple Class have engaged so positively in these areas and the enormous progress they have made throughout the year. The learners have shown growing confidence, resilience and enthusiasm whilst developing important life skills both inside and outside the classroom.



# Reminders!



## Upcoming events!

- Discovery Sports Day - Badger forest school
- Beach trip - Bikeability
- Table tennis tournament
- Healthy Schools workshop



## Maple class team:

Maple Class is led by our teacher, Lucy, and supported by teaching assistants Cassy, Verity and Kate, along with our midday supervisor, June. Phil also works with Maple Class, covering Lucy's PPA time during the week. You may see our names appear in the home-school diary from time to time.

## PSHE Learning - Summer Term

During the Summer term, PSHE across the school will focus on: **Changes at Puberty** and **Money**. These topics will be taught in a sensitive, age appropriate and inclusive way, with learning carefully adapted to meet the needs of all pupils. Lessons on puberty will focus on understanding body changes, personal hygiene, emotional development and respecting privacy, using clear language, visual support and repetition where needed. The money theme will help pupils develop practical life skills, such as recognising coins and notes, making choices and learning about saving and spending in real life contexts. If you have any questions or would like more information about the content being taught, please do not hesitate to contact the school.

## Don't forget...

- **PE** takes place on Tuesday afternoons - please ensure your child brings a PE kit.
- **Swimming** is on Mondays - please make sure your child has their swimming kit in school on this day.
- **Outdoor learning and break times** - as the weather can change, please ensure your child has a coat in school, along with sunscreen.
- **Home-school communication books** - please check these daily for updates or reminders. If you could initial them to show you've seen the message, we'd really appreciate it. Thank you!

For updates, information and useful contacts, please visit our school website or follow us on our Facebook page - [www.doubletrees.org.uk](http://www.doubletrees.org.uk)



## DISCOVERY PATHWAY SPORTS DAY

An afternoon of fun, teamwork and celebration!

### Event Details

Main Date: Monday, 22nd June 2026  
Backup Date: Monday, 29th June 2026 (weather dependent)  
Start Time: 2:00 PM  
Location: St Blazey Cricket Club

### Who Is Taking Part?

Discovery Pathway learners from:

- Cedar Class
- Maple Class
- Cherry Class

### Important Information for Parents & Carers

**Direct Collection from the Venue**  
Learners can be taken home directly from St Blazey Cricket Club at the end of Sports Day. There is no need to return to school.

**Please Remember:**  
Before leaving, check in with a member of staff so we can safely record that your child has been collected.

### Weather Watch

Sports Day is weather permitting. If conditions are unsuitable on 22nd June, the event will move to the backup date: 29th June. Please keep an eye out for school updates.

### We're Looking Forward to It!

- Teamwork
- Active fun
- Celebration of our learners' achievements

Thank you for your continued support - we can't wait to see you there!

Please ensure learners come dressed appropriately for outdoor activity and the weather on the day