

Welcome to Holly Class!



Term:
Spring 1

Hello, everyone! Welcome back to another half term in Holly Class!

We hope you all had a lovely Christmas and are ready for another busy half term!

This half term our topic is 'Travel & Transport'. We will be exploring stimuli linked to a range of different methods of transport such as cars, trains and boats, as well as making some transport themed moving pictures in Design and Technology.

Maths

This half term we will be practicing early addition and subtraction skills, using a range of different concrete resources to support this. We will also continue to work on our early number and counting skills.

English

We will be looking at a variety of transport themed poems this half term. We will be exploring sensory stimuli linked to the poems and using symbols to help us to write some poetry. We will then go on to look at some stories about travel.

PSHE

Our topic this half term is 'Relationships'. We will be identifying family members and friends and exploring what makes a good friend. We will be asking you to send in some family photos in the next few weeks to help learners engage in these activities.

PE

This term we will be learning about balance and agility through a range of gymnastics activities. We will learn to copy movements and practise climbing on, over and through a range of equipment.

RE: Our RE focus question this half term 'What is it like inside a religious building?'. We will be exploring special items linked to churches.

RSE: Our focus will be on different types of relationships. Some learners will also be learning how to identify body parts, including private body parts.

Please don't forget to bring in snack and water bottles each day!

Stay tuned for further letters to be sent out regarding future events. Parent Partnership meeting invites will be sent out soon as they will occur **W/C 16.1.22** (for those learners who did not have an EHCP review in Autumn 2 or scheduled for Spring 1). **Friday 27th January** is a training day and so there will be no school for the learners.



Holly Class Team



Caitlin (Class Teacher)



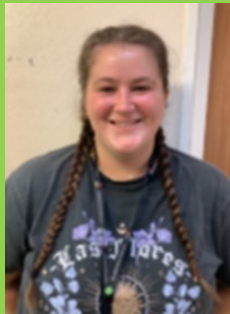
Vicky (Cover Teacher —
Wednesdays)



Amie Teaching Assistant)



Rory (Teaching Assistant)



Jasmine (Teaching Assistant)



Stephen (Teaching assistant)

Class Team

This term we welcome Vicky into Holly class. Vicky will now be the teacher in Holly class on a Wednesday to cover Caitlin's PPA/management time. We also welcome a new Teaching Assistant called Stephen, who will be joining us next week. Stephen and Vicky have both already spent some time in Holly class getting to know learners.

Swimming

We will now be swimming on a **Friday**. Please ensure that your child has a swim kit sent in. Like last term, this will be on a rota basis, so your child may not swim every week. Please send kit in just in case as we will get as many learners into the pool each week as we safely can.

Outdoor Learning

We will be spending lots of time learning outside this term. Please ensure that your child is ready for all weathers! Raincoats and appropriate footwear, as well as a change of clothing will be essential.

Spare Clothes

Please ensure your child has a full set of spare clothes in their bag. We have a very limited supply of spare clothes and it's very easy for things like socks and trousers to get wet whilst it's so rainy outside.

For updates, information and useful contacts, please check our school website and Facebook pages.

www.doubletrees.org.uk