

# Welcome to Holly Class!



Term:  
Summer 1

Hello, everyone! Welcome back to another half term in Holly Class!

This half term our topic will be 'The seaside'. We will be focusing on the environment in Science by exploring the plants and creatures that we might find in our local environment and at the beach. We are also focussing on the work of Amiria Gale, Andy Goldsworthy and Matisse, looking at their art work and creating some of our own using natural materials that can be found outdoors.

## Maths

This half term we will be learning about multiplication and division by making groups of amount and sharing.

## English

We will be reading the story of 'The lighthouse keepsers lunch' and 'Sharing a shell' this term. We will be exploring the setting of the seaside through a sensory play-based approach.

## PSHE

Our topic this half term continues to be 'The world we live in'. We will be focusing on how we can take care of the environment and what it means to belong to a community.

## PE

This term we will focusing on co-ordination. We will be working on our sending and receiving skills by throwing and catching balloons, beanbags and balls.

**RE:** Our RE focus question this term is 'How do we look after special books?' We will be learning how to look after special items including books that are important to us.

**RSE:** Our focus will be on recognise different relationships. We will be looking at different relationships in our lives and staying safe online,



**Date to be confirmed**—Parent Partnership Meetings (This will allow Jasmine to get to know the children in the class better.

**29th April** - International Dance Day

**1st and 2nd May** - Bank holiday and INSET Day

**8th May** - Bank holiday

**Week beginning 8th May** - Mental Health Awareness week

# Holly Class Team



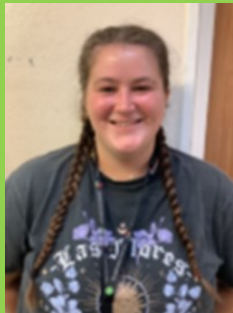
Jasmine (Class Teacher)



Leigh (HLTA cover —  
Tuesdays)



Jess (Mid-day supervisor)



Jasmine (Teaching Assistant)



Matilda (Teaching assistant)



Rory (Teaching assistant)

## Class Team

This term we welcome Jasmine to the Holly class team. Leigh will cover the class on a Monday afternoon to cover Jasmine's PPA time.

## Swimming

We will continue to swim on a **Friday** this half term. Please ensure that your child has a swim kit sent in each week.

## Outdoor Learning

We will be spending lots of time learning outside this term. Please ensure that your child is ready for all weathers! Sun hats and sun cream may be needed, as well as a change of clothing.

## PE kit

Please ensure that your child has an appropriate PE kit for our lessons on a Wednesday. This should include a t-shirt, short/bottoms and appropriate footwear. If possible, these should be left in school and will be sent home at the end of each

For updates, information and useful contacts, please check our school website and Facebook pages.

[www.doubletrees.org.uk](http://www.doubletrees.org.uk)